



# SUMMER ENGLISH & AMERICAN CULTURE PROGRAM

SUMMER 2017





# WELCOME TO HOUSTON, TX

HOUSTON IS THE  
**4TH LARGEST**  
CITY IN THE COUNTRY.

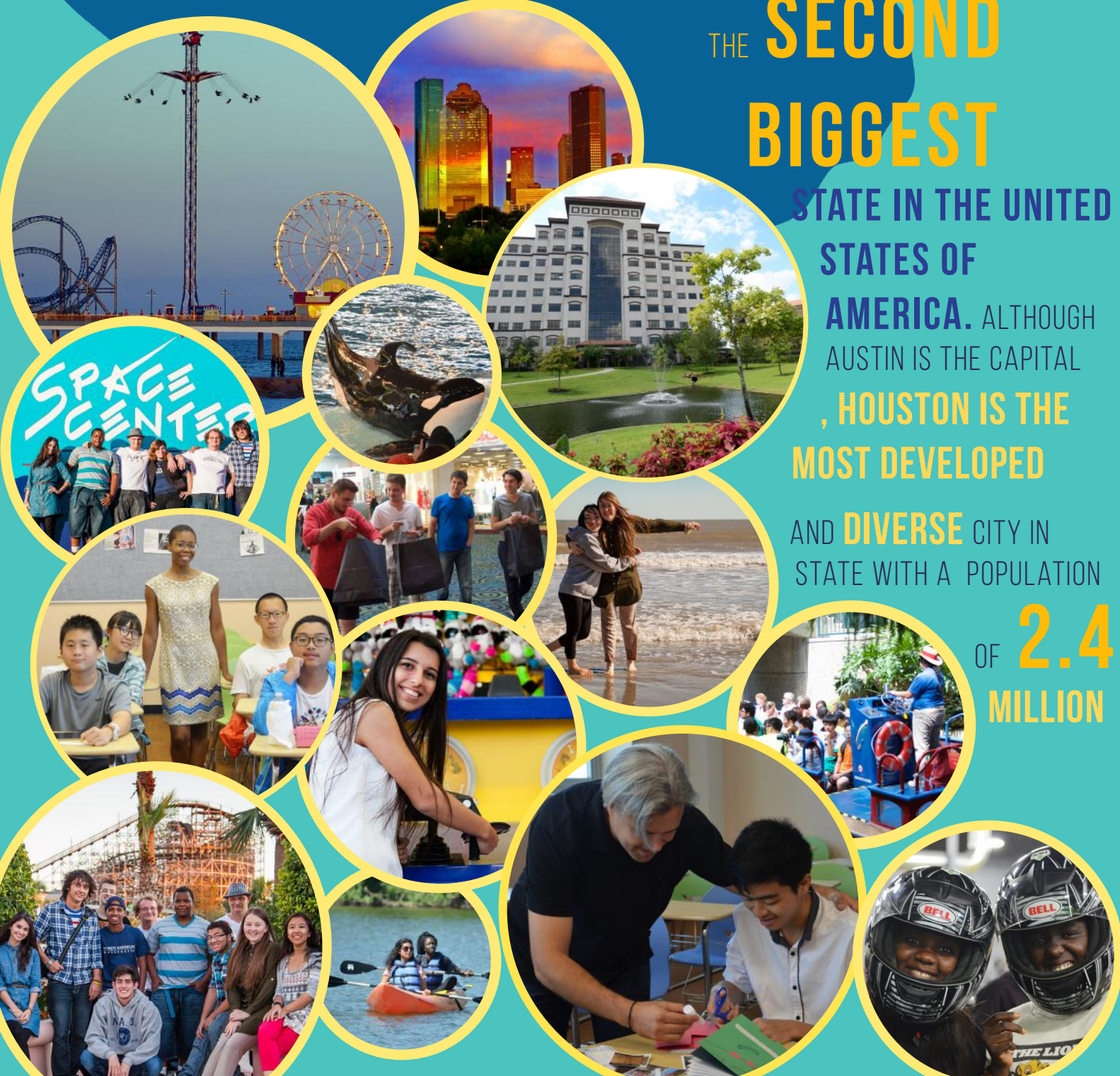
LOCATED IN **TEXAS**,

THE **SECOND**  
**BIGGEST**

STATE IN THE UNITED STATES OF AMERICA. ALTHOUGH AUSTIN IS THE CAPITAL, HOUSTON IS THE MOST DEVELOPED

AND DIVERSE CITY IN STATE WITH A POPULATION

OF **2.4**  
MILLION







# ACHIEVE PROFICIENCY IN ENGLISH & HAVE FUN!

**GLS INTENSIVE ENGLISH PROGRAM OFFERS A VARIETY OF COURSES & USES THE LATEST ESL TEACHING TECHNIQUES. OUR PROGRAM OFFERS A UNIQUE COMBINATION OF FUN & ACADEMICS FOR FULL CULTURAL IMMERSION.**

## DURATION

- 6 WEEK
- 6 WEEK
- 18 DAYS
- 18 DAYS
- 18 DAYS

## PROGRAM

- ENGLISH & CULTURE PROGRAM
- ENGLISH SAT PROGRAM
- ENGLISH SAT CAMP
- ENGLISH & CULTURE CAMP 1
- ENGLISH & CULTURE CAMP 2

## 2017 DATES

- JULY 3- AUG 11
- JULY 3- AUG 11
- JUNE 29 - JULY 16
- JUNE 29-JULY 16
- JULY 27- AUG 13

## COST

- \$4975
- \$4975
- \$3250
- \$3250
- \$3250

## ACTIVITY PACKAGE INCLUDED WITH ALL PROGRAMS!

- VISIT NEARBY CITIES & HISTORICAL SITES
- SIX FLAGS AMUSEMENT PARK
- NASA JOHNSON SPACE CENTER
- SEAWORLD SAN ANTONIO AMUSEMENT PARK
- THE GALLERIA & PREMIUM OUTLETS SHOPPING MALL
- HELICOPTER TOUR OF HOUSTON
- VISIT GALVESTON BEACH & KEMAH BOARDWALK
- HOUSTON MUSEUM OF NATURAL SCIENCE
- IFLY WIND TUNNEL EXPERIENCE



## CONVERSATION PARTNERS:

DURING ACTIVITIES, STUDENTS ARE GUIDED BY CONVERSATION PARTNERS (CP). CONVERSATION PARTNERS ARE STUDENTS WHO ARE NATIVE ENGLISH SPEAKERS AND PRACTICE SPOKEN ENGLISH WITH GULF LANGUAGE SCHOOL PARTICIPANTS. OUR CONVERSATION PARTNERS ALSO ACT AS GUIDES TO STUDENTS WHILE ENJOYING SUMMER ACTIVITIES AND HELP THEM IMPROVE THEIR SPOKEN ENGLISH.

\* SCHEDULES AND ACTIVITIES ARE SUBJECT TO CHANGE



THE GALLERIA IS FAMED AS THE BIGGEST SHOPPING MALL IN HOUSTON. THE MALL CONSISTS HUNDREDS OF SHOPS FROM ALL MAJOR BRANDS AND EVEN INCLUDES AN ICE SKATING RINK.

THE PREMIUM OUTLET MALL IS AN OUTDOOR SHOPPING CENTER WHERE SHOPPERS CAN BUY THEIR FAVORITE BRANDS AT THE LOWEST PRICE.



**KEMAH**  
BOARDWALK

KEMAH IS A SEASIDE CITY WITHIN THE HOUSTON

METROPOLITAN AREA. KEMAH'S MAIN INDUSTRY COMES FROM SHIPPING. THE CITY IS A TOURIST DESTINATION FOR THE AREA'S RESTAURANTS & ATTRACTIONS



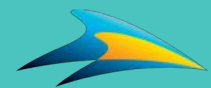
GALVESTON ISLAND HISTORIC  
**PLEASURE PIER**

GALVESTON IS A COASTAL CITY THAT IS LOCATED NEAR HOUSTON. THIS CITY HOSTS THE BUSIEST PORT IN THE UNITED STATES AND IS 13TH BUSIEST IN THE WORLD!



*the Houston  
Museum of  
natural science*

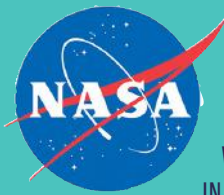
THE HOUSTON MUSEUM OF NATURAL SCIENCE IS A SCIENCE MUSEUM LOCATED ON THE NORTHERN BORDER OF HERMAN PARK IN HOUSTON, TEXAS, USA. IN THIS MUSEUM YOU CAN ANALYZE THE PAST HERITAGES OF DIFFERENT AMAZING THINGS



**SeaWorld**

SEAWORLD IS A MARINE THEME PARK LOCATED IN SAN ANTONIO ABOUT 150 MILES WEST OF HOUSTON. THE PARK OFFERS VISITORS DOLPHIN AND WHALE PERFORMANCES AS WELL AS MANY EXCITING RIDES.





JOHNSON SPACE CENTER IS A WONDERFUL PLACE FOR STUDENTS WHO ARE INTERESTED IN SCIENCE AND SPACE AS NASA IS RESPONSIBLE FOR AERONAUTICS AND AEROSPACE RESEARCH.

VISITORS ARE ABLE TO TOUR AND SEE REAL ARTIFACTS FROM SPACE EXPLORATION.



A HELICOPTER RIDE OVER THE CITY OF HOUSTON IS ORGANIZED FOR THE SUMMER FUN PROGRAM STUDENTS. THE VIEW FROM THE HELICOPTER TRIP OFFERS STUDENTS AN AMAZING EXPERIENCE AS THEY FLY OVER THE CITY.



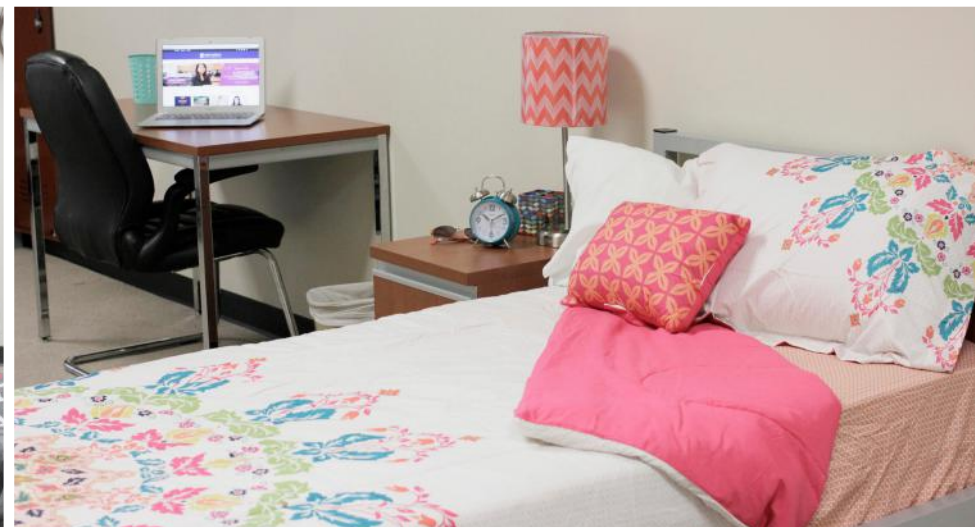
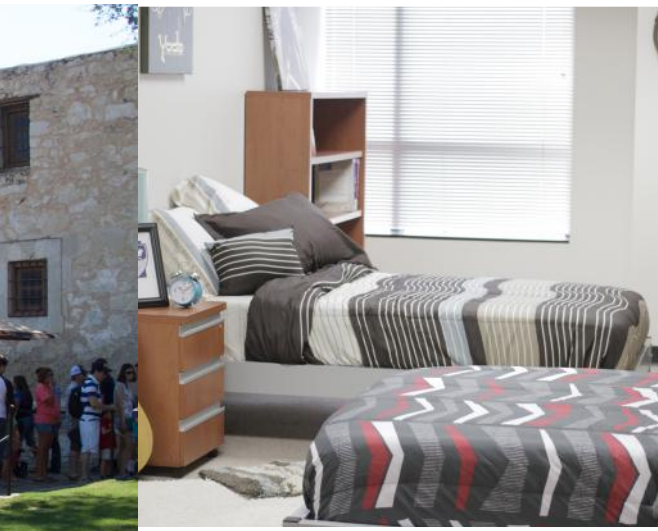




SIX FLAGS IS THE WORLD'S LARGEST AMUSEMENT PARK CORPORATION BASED ON NUMBER OF PROPERTIES IN MEXICO, AND THE UNITED STATES. THIS IS THE ONLY PARK WHICH IS BUILT WITH THE AMAZING AND UNBELIEVABLE ATTRACTIONS.







## THE GULF LANGUAGE SCHOOL CAFETERIA SERVES DELICIOUS, HOME COOKED FOODS.

## DORM & MEAL PLANS

OUR CAFETERIA IS BUFFET STYLE AND STUDENTS ARE SERVED AS MUCH FOOD AS THEY REQUEST. OUR KITCHEN STAFF PREPARES AND SERVES A DIVERSE MENU OF FOODS FROM ALL OVER THE WORLD. BREAKFAST, LUNCH AND DINNER ARE AVAILABLE TO ALL STUDENTS AS MEALS ARE SERVED ON CAMPUS AS WELL AS AT THE DORMS, SEVEN DAYS A WEEK. MEALS INCLUDE A CHOICE OF ENTREE, SOUP, SALAD AND BEVERAGE.

THE SUMMER PROGRAM FEE INCLUDES TUITION, MEALS, DORMS, ACTIVITIES AND TRANSPORTATION





## THE APPLICATION PROCESS IS EASY!

FILL OUT PROGRAM APPLICATION FORM ONLINE  
SEND PASSPORT PICTURE PAGE TO [INFO@GULFESL.ORG](mailto:INFO@GULFESL.ORG)

## VISA APPLICATION

- COMPLETE DS-160 ONLINE VISA APPLICATION
- GET A VISA INTERVIEW DATE
- PAY FOR THE VISA APPLICATION FEE (VARIES IN EACH COUNTRY)

### WHAT TO BRING TO THE US EMBASSY

- 2 PICTURES
- AN INVITATION LETTER
- STRONG FINANCIAL SUPPORT DOCUMENTS & BANK STATEMENTS
- IF FINANCIALLY DEPENDENT ON OTHER PERSON, PROOF OF RELATIONSHIP WITH THE PARTICULAR PERSON SUCH AS A BIRTH CERTIFICATE ALONG WITH THE PERSON'S SALARY PROOF, JOB DETAIL AND PASSPORT COPY



**NORTH  
AMERICAN  
UNIVERSITY**

### CONTACT US

**GULF LANGUAGE SCHOOL**  
11929 WEST AIRPORT BLVD  
STAFFORD, TX 77477

**EMAIL:** [INFO@GULFESL.ORG](mailto:INFO@GULFESL.ORG)  
**PHONE:** 832.230.5555  
**WEBSITE:** [WWW.NA.EDU](http://WWW.NA.EDU)